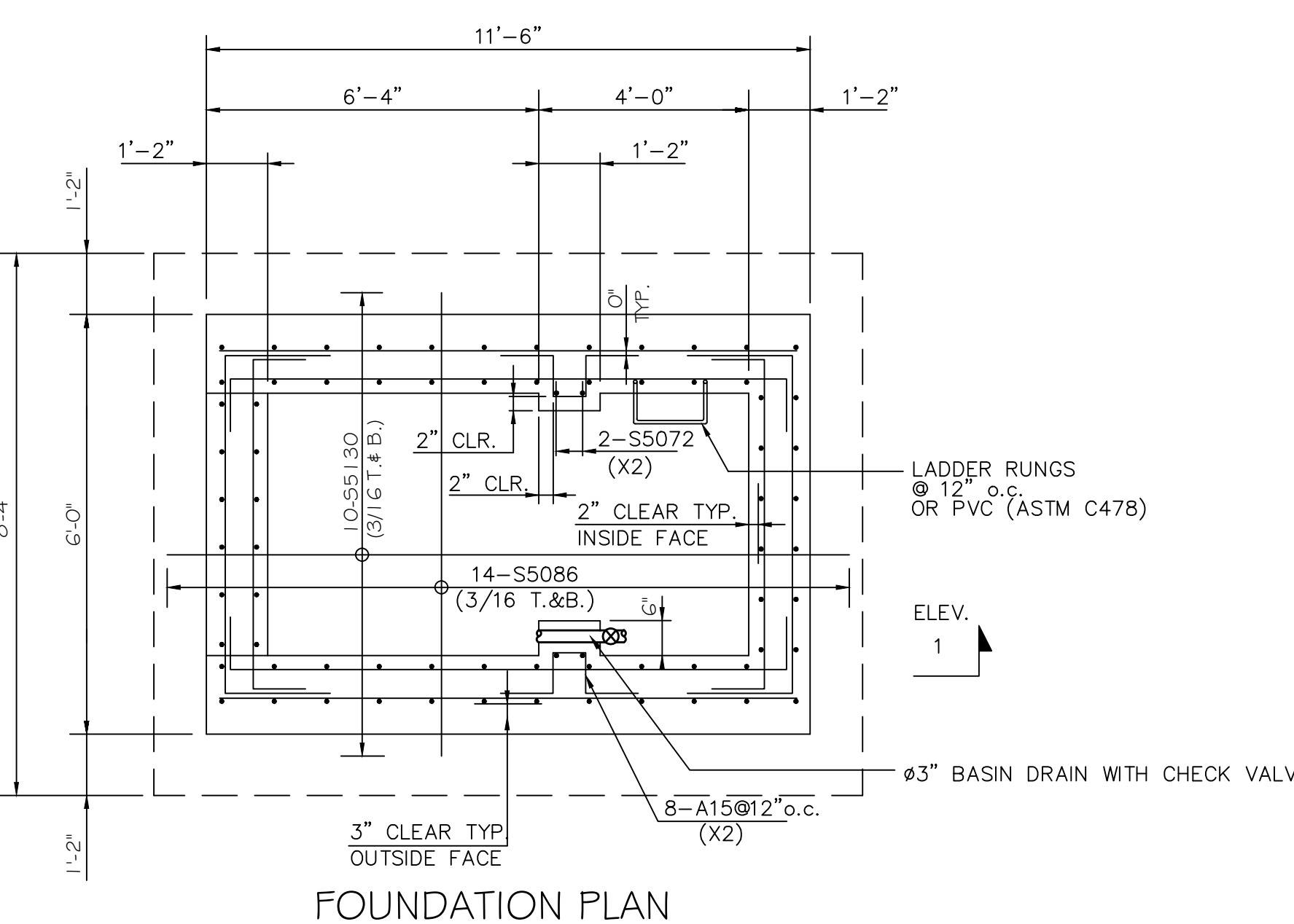
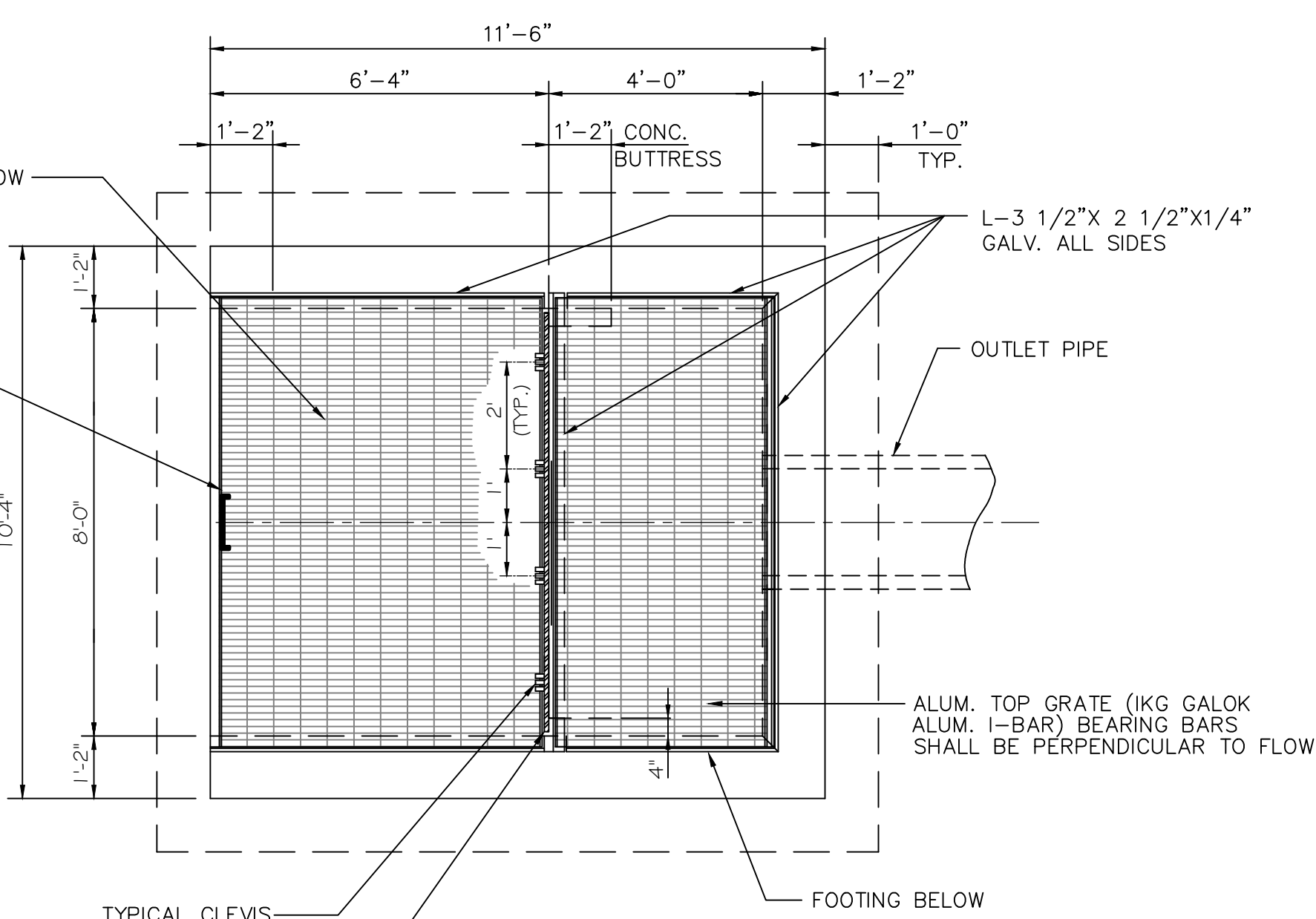


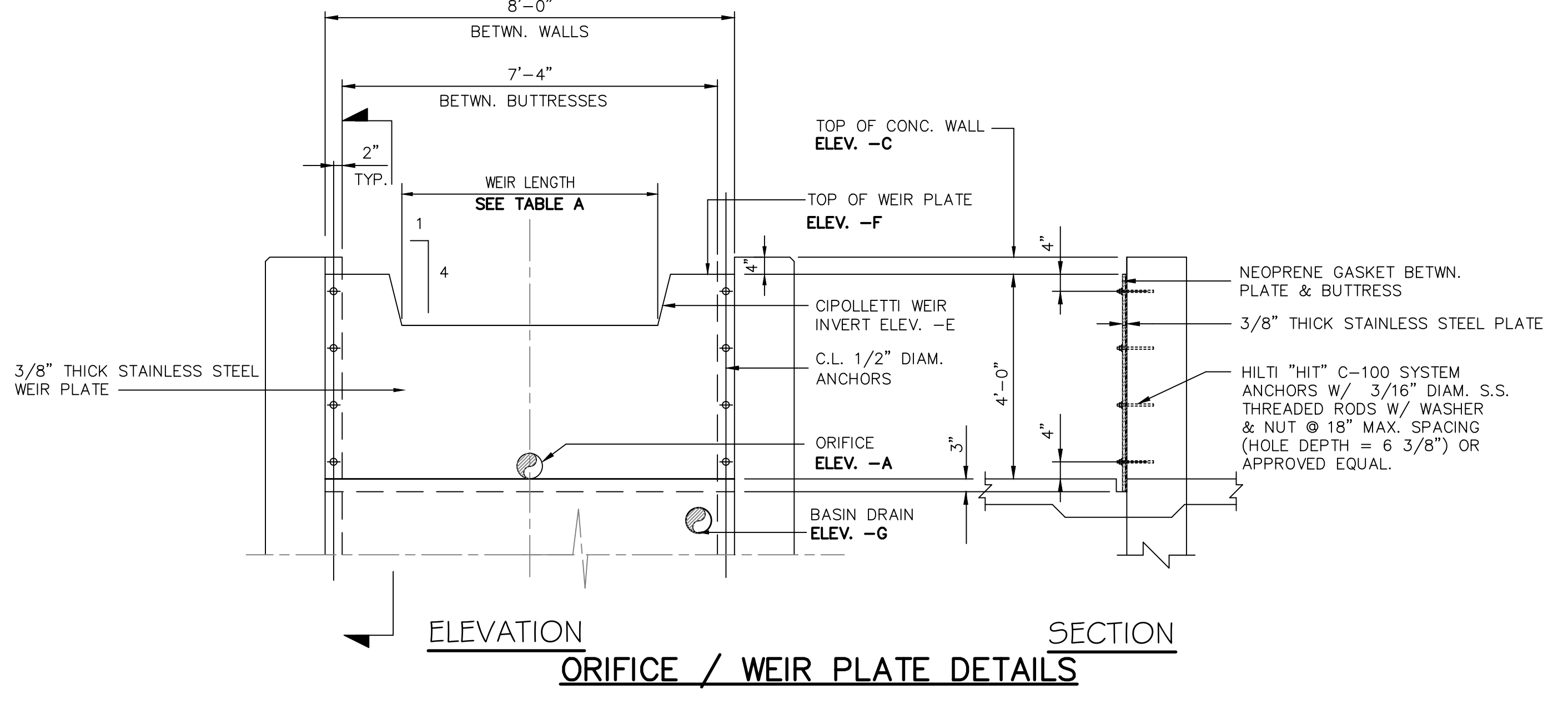
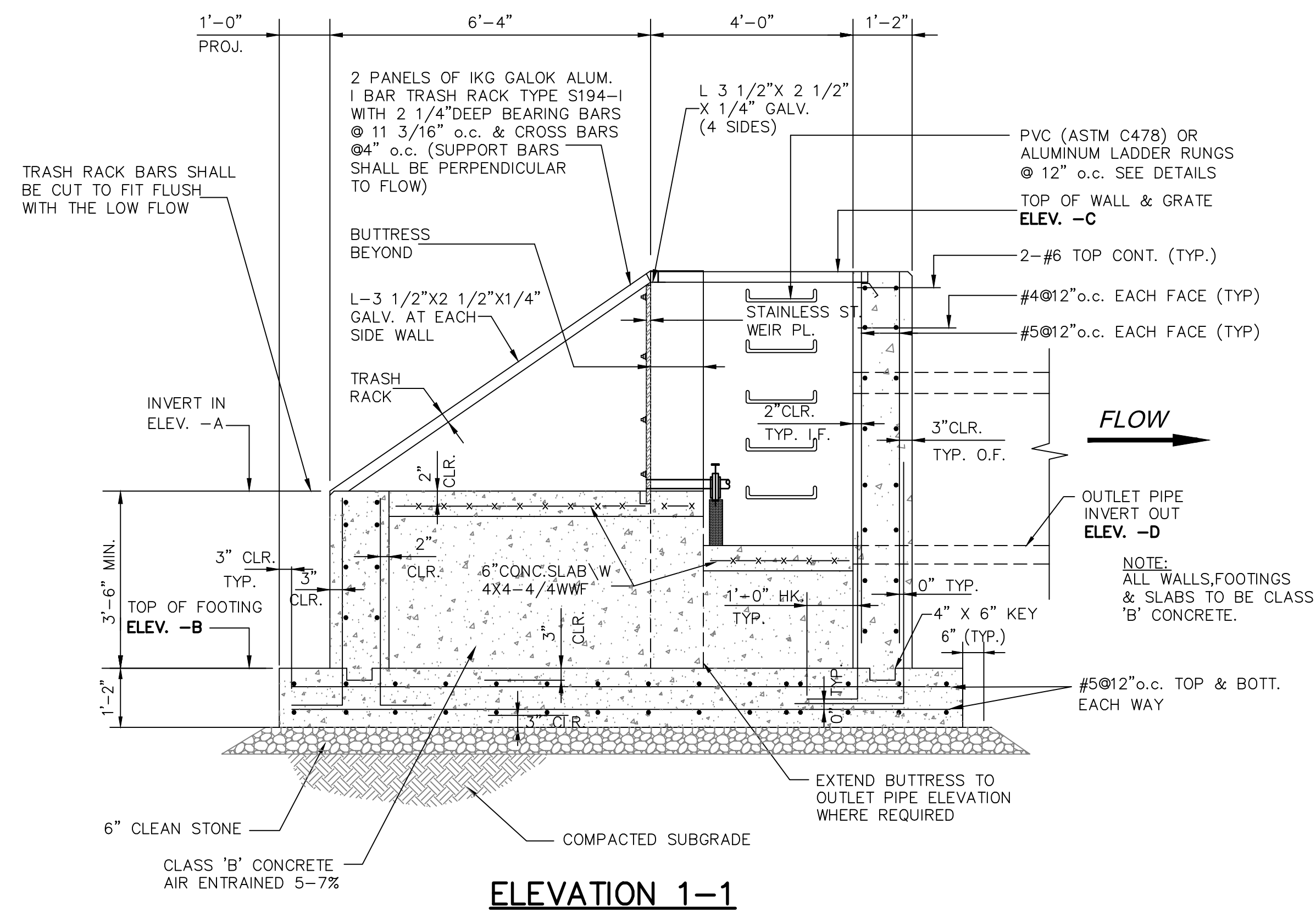
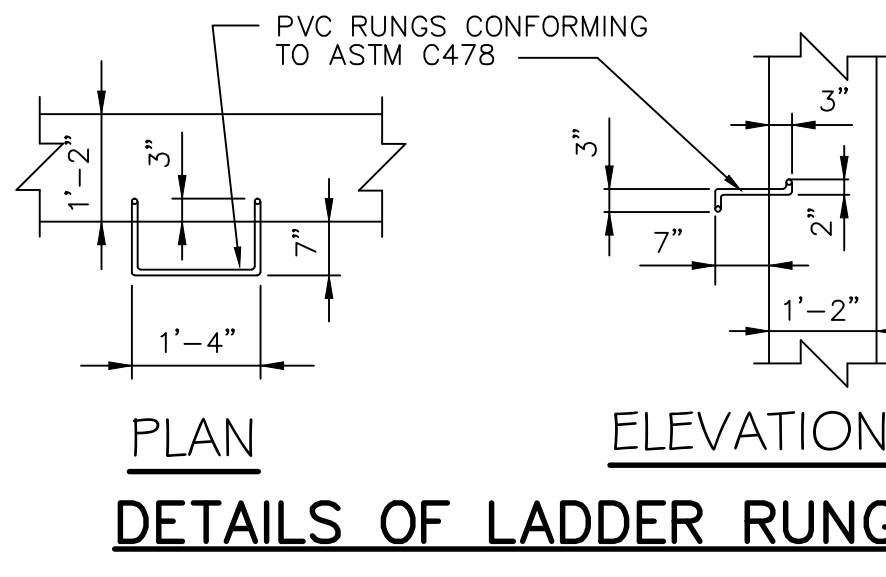
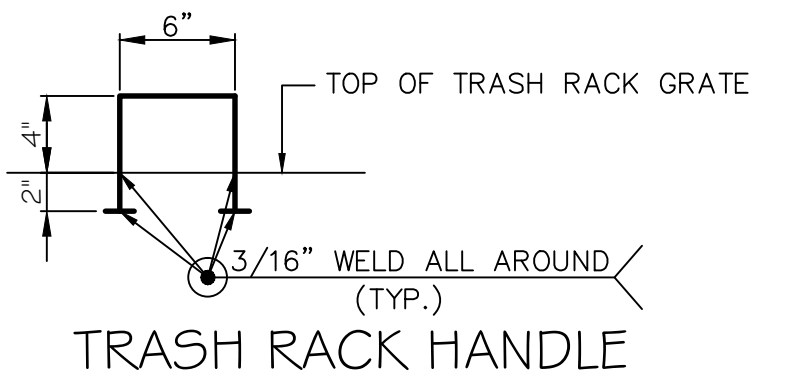
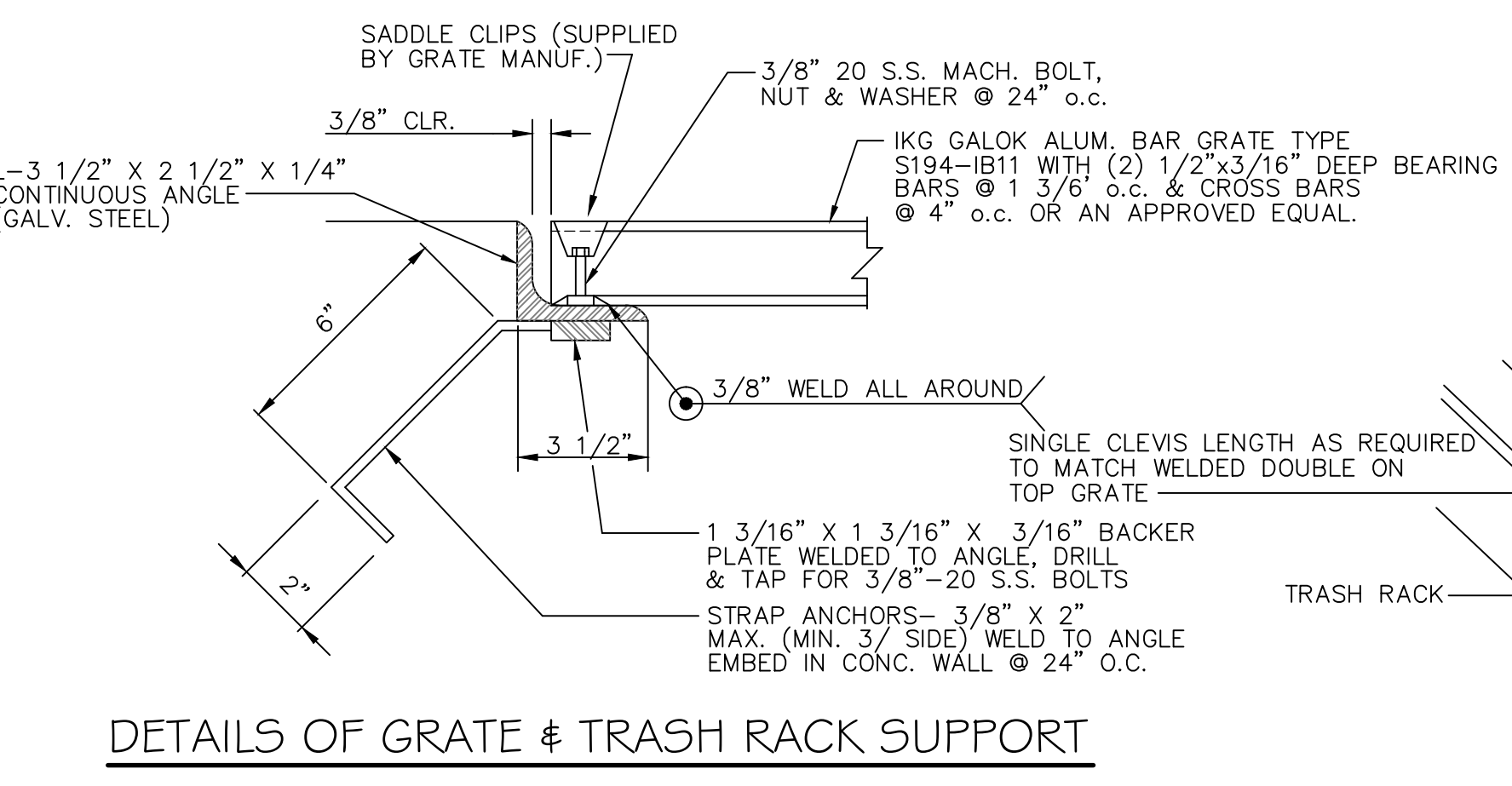
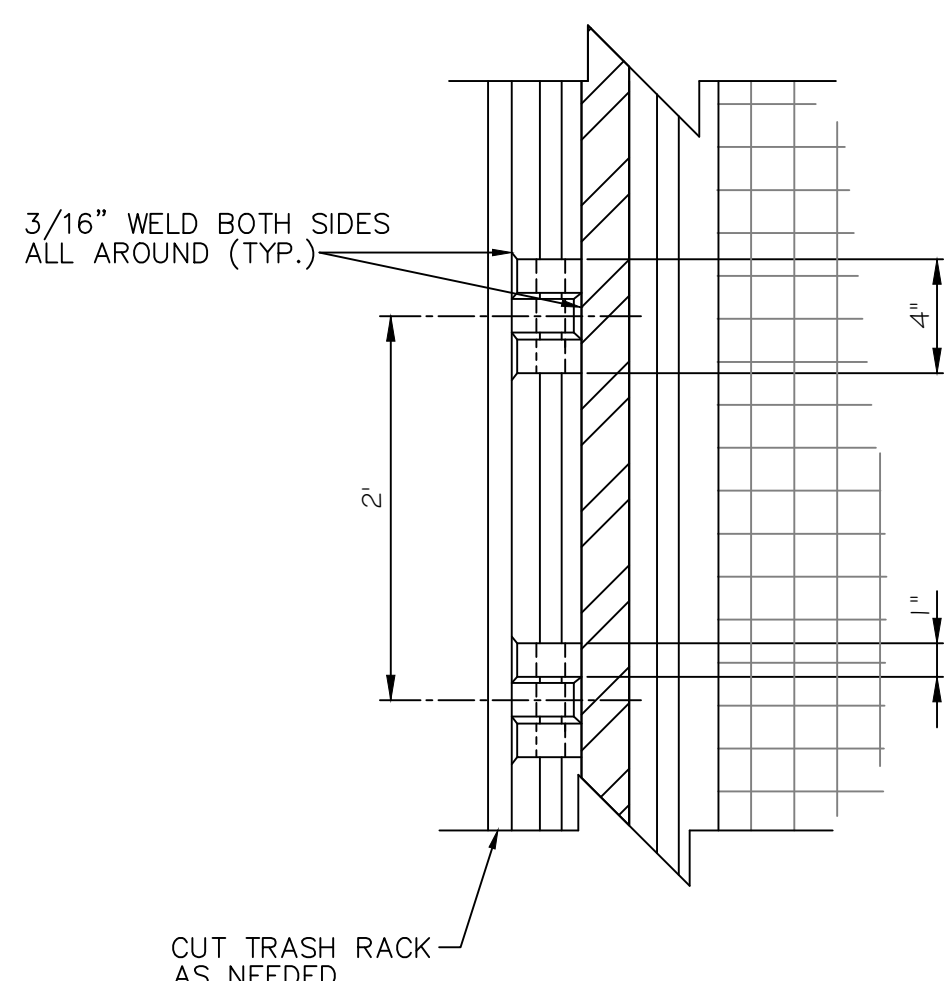
TYPE S194-IB11, 2 1/4" DEEP BEARING BARS, 1 3/16" O.C. AND CROSS BARS 4" O.C. BEARING BARS PERPENDICULAR TO FLOW

1/2" GALV. ROUND STOCK HANDLE 3/16" WELD TO TRASH RACK BEARING BAR



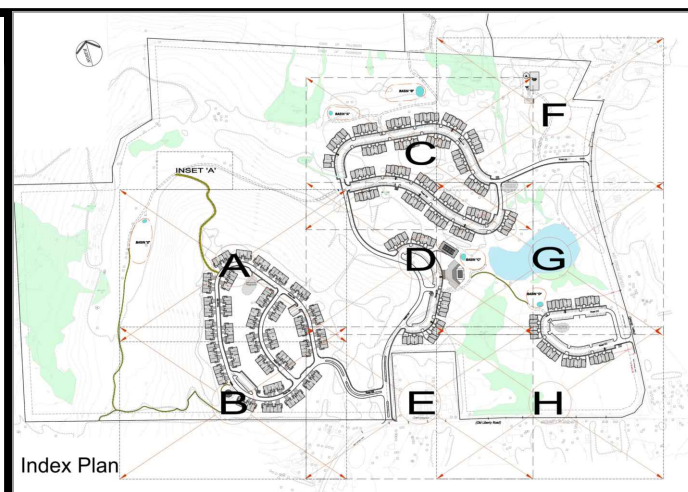
BASIN	TOP OF FOOTING		ORIFICE		CIPOLETTI WEIR		OUTLET PIPE		TOP OF WALL	
	ELEV. -B	ELEV. -A	SIZE	ELEV. -E	LENGTH	ELEV. -F	ELEV. -D	SIZE	ELEV. -C	
A	1381.5'	1385.0'	Ø3"	1388.5'	3.0'	1390.0'	1385.0'	Ø18"	1390.0'	
B	1371.5'	1375.0'	Ø3"	1378.5'	3.0'	1380.0'	1375.0'	Ø18"	1380.0'	
C	1480.5'	1484.0'	Ø3"	1486.0'	1.5'	1488.0'	1484.0'	Ø18"	1490.0'	
D	1491.5'	1495.0'	Ø3"	1498.0'	3.0'	1500.0'	1495.0'	Ø18"	1500.0'	
E	1491.5'	1495.0'	Ø3"	1498.5'	4.0'	1499.5'	1495.0'	Ø18"	1500.0'	

DETENTION BASIN OUTLET STRUCTURE DATA



DETENTION BASIN OUTLET STRUCTURE

IF IN A POSITION OF THE ENGINEER, ARCHITECT, LANDSCAPE ARCHITECT, OR OTHER PROFESSIONAL PERSON, YOU ARE REQUIRED TO SIGN AND SEAL THIS DRAWING IN ACCORDANCE WITH THE PROFESSIONAL SEAL ACT AND THE PROFESSIONAL SEAL ACT REGULATIONS. THE SEAL AND SIGNATURE OF THE ENGINEER, ARCHITECT, LANDSCAPE ARCHITECT, OR OTHER PROFESSIONAL PERSON ARE REQUIRED TO BE PLACED ON THIS DRAWING IN ACCORDANCE WITH THE PROFESSIONAL SEAL ACT AND THE PROFESSIONAL SEAL ACT REGULATIONS. THE SEAL AND SIGNATURE OF THE ENGINEER, ARCHITECT, LANDSCAPE ARCHITECT, OR OTHER PROFESSIONAL PERSON ARE REQUIRED TO BE PLACED ON THIS DRAWING IN ACCORDANCE WITH THE PROFESSIONAL SEAL ACT AND THE PROFESSIONAL SEAL ACT REGULATIONS.



CONSULTANTS  
**PS&S**  
integrating design & engineering  
67A MOUNTAIN BOULEVARD EXTENSION  
P.O. BOX 4039  
WARREN, NEW JERSEY 07059  
PHONE: (732) 560-9700  
FAX: (732) 560-9768

LISA A. DIGEROLAMO, P.E.  
PROFESSIONAL ENGINEER  
NEW YORK LIC. NO. 086749  
SIGNATURE  
DATE 7/1/2016

REV	DATE	DESCRIPTION
1	02/10/16	PRE-ISSUE FOR TEAM REVIEW
2	05/11/16	PRELIMINARY SITE PLAN REVIEW
3	07/5/16	SUBMISSION TO PLANNING BOARD

PROJECT TITLE  
PRELIMINARY & FINAL SITE PLAN  
**Gan-Eden Estates**  
TOWN OF THOMPSON SULLIVAN COUNTY NEW YORK  
TAX LOT SECTION 2, BLOCK 1/LOT 6.3

SHEET TITLE		INITIAL DATE	JOB NO.
STORMWATER DETAILS		12/04/2015	01895/0053
SCALE	AS SHOWN		B/O
DRAWN	CY/AM		SHEET NO.
CHKD.	AG/LAD		<b>C-16</b> 70 OF 79